

J  
A  
R  
D  
I  
N  
I  
Q  
U  
E

IN  
SEARCH  
OF THE  
UNIQUE

# JARDINIQUE

Garden Antiques



JARDINIQUE has grown and evolved over 18 years to become one of the largest and most respected garden antiquary businesses in the UK.

Whether you are a private individual, dealer or garden designer, we offer a bespoke service to satisfy your individual needs. Situated near Alton in Hampshire, Jardinique's attractive setting and the thoughtful presentation of its collections will do much to inspire your thoughts and stimulate new ideas. We have established ourselves as a proven destination for the discovery of unique, distinctive, special items for the home and garden whatever the size, period or style.

We have years of experience in sourcing the right piece for the right place, and enjoy sharing our enthusiasm, knowledge and expertise. We pride ourselves on the care we take when listening to our customers, ensuring we tailor our advice to their individual requirements and preferences. We are constantly sourcing new stock and will happily search on their behalf.

The Jardinique brand and website have recently been refreshed to showcase our diverse range of top quality, competitively priced ornaments for the home and garden. Our website is continually being updated with images and details of all our current stock. We hope you enjoy a visit to our website to see the distinctive pieces we have to offer: [www.jardinique.co.uk](http://www.jardinique.co.uk) or contact us on 01420 560055.





JARDINIQUE



JARDINIQUE





JARDINIQUE

# HOW TO FIND A GENUINE GARDEN ANTIQUÉ

*by Sarah Neish*

One of the questions we are often asked is “*How can I spot a genuine garden antique?*” Our response “*Years of practise, research, and a keen interest in the subject, as well as a willingness to rely on gut instinct.*” During the 18 years or so that Jardinique has been in business, the way in which we source genuine, quality pieces has been greatly enhanced by developments in technology; principally the internet. However, historic paper-based information and a keen eye for detail still have their place.

Use of the internet gives many more people access to the same information and, as a consequence, the competition for genuine pieces has become keener. However, a little knowledge can sometimes be a dangerous thing and it is always wise to use more than one source of information. First-hand knowledge, experience and, where possible, a closer look are still valuable tools of the trade.

An ability to recognise specific models, makes and materials is essential. This is also vital in accurately informing an opinion and value. Viewing on-line is often not enough. The presence of a maker’s stamp may be reassuring but this could conceivably have been copied in a later reproduction. Coade, Blashfield, Bromsgrove and Coalbrookdale are just some of the recognisable names to look out for and wonderful to see on a piece, provided they are genuine.

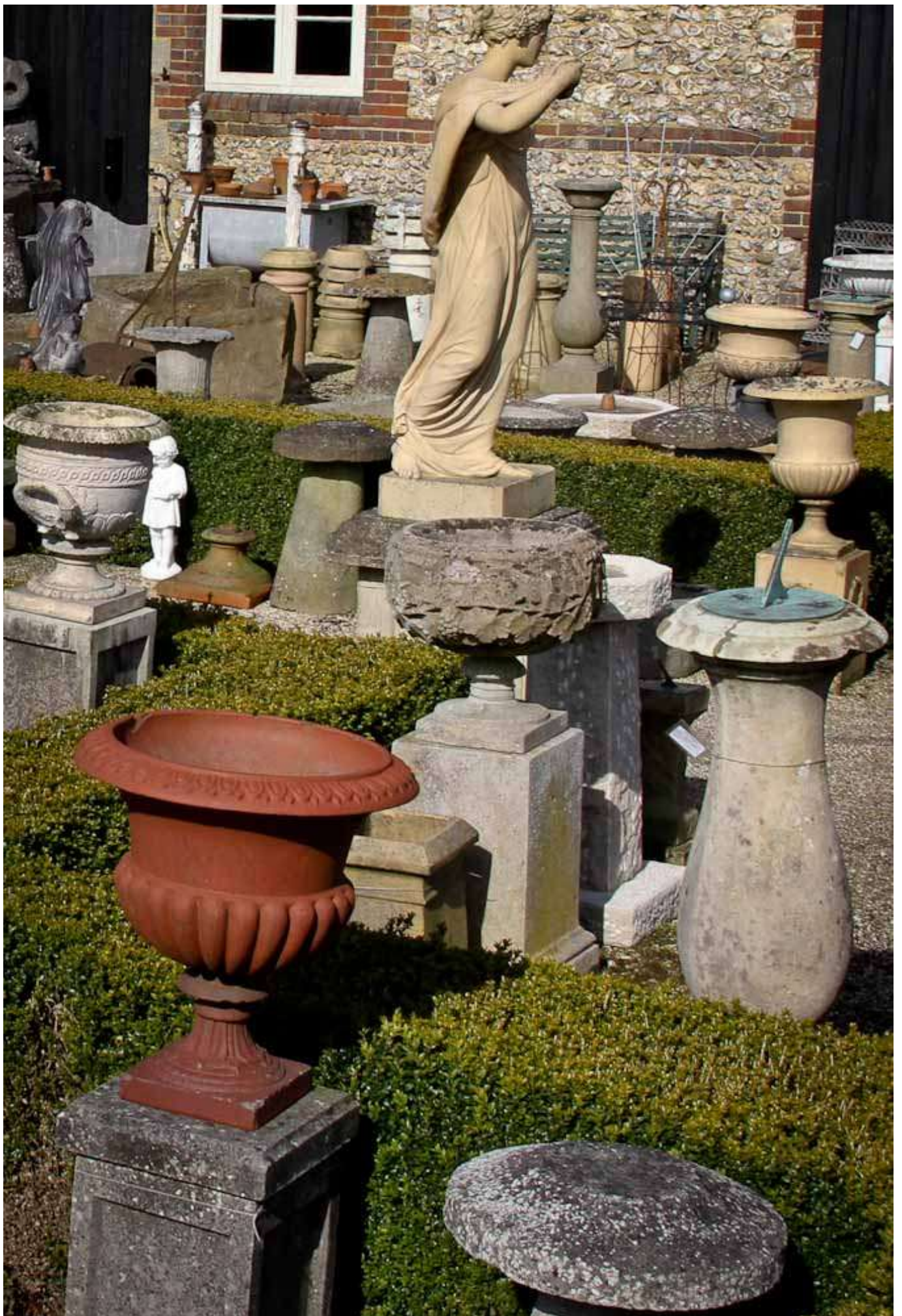
Historic pieces of information are also valuable sources can include catalogues from old auctions and makers or museum publications. Research from these sorts of documents enables us to discover who the artist was, where he or she came from and, in recent years, when a similar item was last sold at auction and for how much. In turn, this will give an indication of what a piece could be worth today.

The condition of a piece is another valuable measure. A crack, chip or blemish can drastically reduce the value of any antique. Whilst some damage, such as a clean break, can be repaired securely and sympathetically, flaking as a result of deep frost damage can prove more difficult to restore satisfactorily. Conversely, however, prolonged exposure to the weather and associated wear and tear may add value to a sought-after patina.

Experience has taught us well and we are now able to recognise real quality in a piece and sift out the good from the bad, the work of a craftsman from the mass-produced, and the genuine piece from the fake.

With a keen eye and attention to detail, quality should shine through. We have learnt to trust our instincts. Now if we like something, we are confident that others will too.





JARDINIQUE



SUMMER is now on its way and the rain of the past 12 months, and more recently the unexpected cold spells, have passed. It is time to get out into the garden in search of new shoots and empty spaces. We look forward to listening to your requirements, sharing our knowledge, expertise and enthusiasm and helping you fill those gaps.

We can inspire some fresh thinking in your garden that may include focal points for statuary or planters and plant supports for colour and height.

You may feel like a fresh feature in your garden such as a statue, sundial, a bird bath for wildlife or seating. Whatever it might be we are here to help.

We look forward to welcoming you here soon to discover the unique, distinctive, special things we have to offer.

Edward & Sarah Neish



## JARDINIQUE

Old Park Farm, Abbey Road, Beech,  
Alton, Hampshire GU34 4AP

T: 01420 560055

E: [enquiries@jardinique.co.uk](mailto:enquiries@jardinique.co.uk)

[jardinique.co.uk](http://jardinique.co.uk)

